

KING ISLAND SCHEELITE LIMITED

Investor Update
September 2011



Disclaimer



This presentation has been prepared by King Island Scheelite Limited (“KIS”) as a summary of its King Island Scheelite Project. It is for general information purposes only.

This presentation is not and should not be considered as an offer or invitation to subscribe for or purchase any securities in KIS, or as an inducement to make an offer or invitation with respect to those securities. No agreement to subscribe for securities in KIS will be entered into on the basis of this presentation.

This presentation contains certain forward-looking statements which have not been based solely on historical facts but, rather, on KIS current expectations about future events and on a number of assumptions which are subject to significant uncertainties and contingencies many of which are outside the control of KIS and its directors, officers and advisers.

This presentation contains Exploration Targets which are conceptual in nature where there has been insufficient exploration to define full mineral resources and it is uncertain that further exploration will result in the determination of a Mineral Resource.

Due care and attention has been taken in the preparation of this presentation. However, the information contained in this presentation (other than as specifically stated) has not been independently verified for KIS or its directors and officers, nor has it been audited. Accordingly, KIS does not warrant or represent that the information contained in this presentation is accurate or complete. To the fullest extent permitted by law, no liability, however arising, will be accepted by KIS or its directors, officers or advisers, for the fairness, accuracy or completeness of the information contained in this presentation.



King Island Scheelite



Company	
King Island Scheelite Limited	(ASX:KIS)
Shares	81.8M shares on issue \$0.20/share price (31/08/11) \$16.4M market capitalisation
Board	<ul style="list-style-type: none"> • Tony Haggarty Chairman (9%) • Robin Morritt Director (16%) • Andy Plummer Director (4%) • Mr Li Li Director (5%) HNC • Ian Morgan Company Secretary
Executive	<ul style="list-style-type: none"> • Simon Bird (Chief Executive Officer) • Alvin Johns (Chief Metallurgist) • Sue Jolliffe (Project Accountant)
Project Team	<ul style="list-style-type: none"> • Tim Callaghan (Geology) • Alan Fudge (Mining) <i>former King Island mine manager</i> • Neville Wiggs & Rob Hill (Infrastructure & Project Coordinating) • GR Engineering (Engineering – Plant) • Nick Moony (Metallurgy)

Board and Management team with substantial project development, exploration and mine management experience.



King Island Scheelite



Dolphin Tungsten Project

Ownership	100% owned by KIS
Location	King Island, Tasmania, Australia
History	<ul style="list-style-type: none"> Operated as an open pit between 1917 and 1975, then as an underground until 1990. Gravity and flotation processes produced high grade WO₃ concentrates. Closed then site rehabilitated in 1990 due to low tungsten prices. Asset acquired from Rio Tinto in 2005 and feasibility study conducted by KIS. KIS entered into a 50/50 JV with Hunan Nonferrous Metals ('HNC') in 2008. JV terminated in December 2010 with KIS regaining 100% of the project. HNC forgave KIS debt, in exchange for a 2% royalty on future gross revenue, capped at \$3.9m.
Current Project	<p>Establish a processing facility for ore and tailings based on flotation</p> <p>Re-treat tailings to produce 1,300 tonnes of contained tungsten per annum (2 years)</p> <p>Re-open former underground mines to produce 3,600 tonnes of contained tungsten per annum (10 years)</p>
Resource	<p>4.76 Mt @ 1.30% WO₃ (Dolphin Underground)</p> <p>1.65 Mt @ 0.96% WO₃ (Bold Head Underground)</p> <p>2.7 Mt @ 0.17% WO₃ (Tailings)</p>
Reserve	<p>2.69 Mt @ 1.04% WO₃ (Dolphin Underground)</p> <p>0.61 Mt @ 0.76% WO₃ (Bold Head Underground)</p>
Dolphin South Exploration Potential	<ul style="list-style-type: none"> Swan extended mineralisation Decline extended mineralisation

Resource and Reserve details are consistent with previous announcements in accordance with JORC Code 2004.



Tungsten



Turbine blades contain up to 10% tungsten. (Siemens AG, Germany).



Cemented carbide coated drills improve productivity (Mitsubishi Materials Cooperation & Hitachi Tool Engineering Ltd).

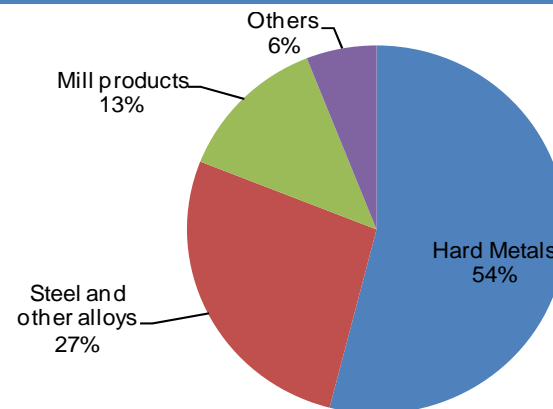
Properties

- Highest melting point & lowest vapour pressure of all metals.
- Highest tensile strength at high temperatures.
- Tungsten carbide products are the hardest of all metals.
- Among the heaviest of all metals.
- Brilliant sheen, is scratch and corrosion resistant and conducts electricity well.

Applications

- Cutting tools.
- Mining / oil / gas drilling equipment.
- Nuclear reactors.
- Specialty chemicals.

The main global uses of tungsten



Source: World Mineral Statistics Database, British Geological Survey



Market



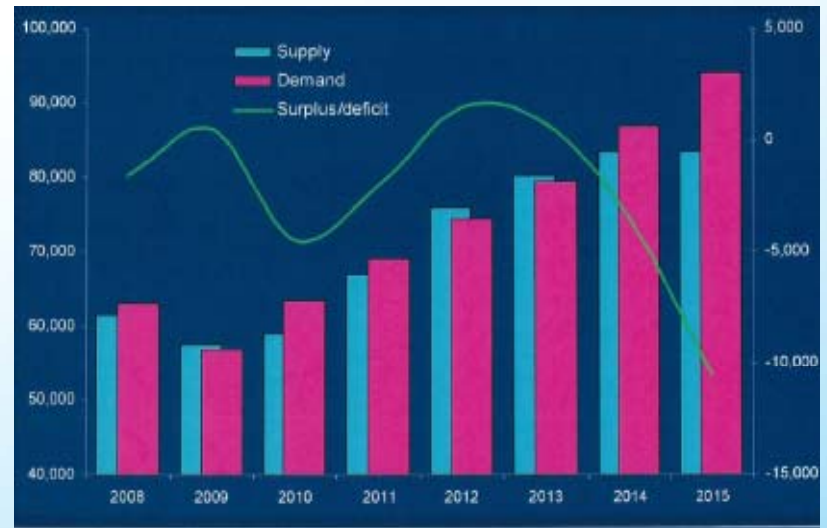
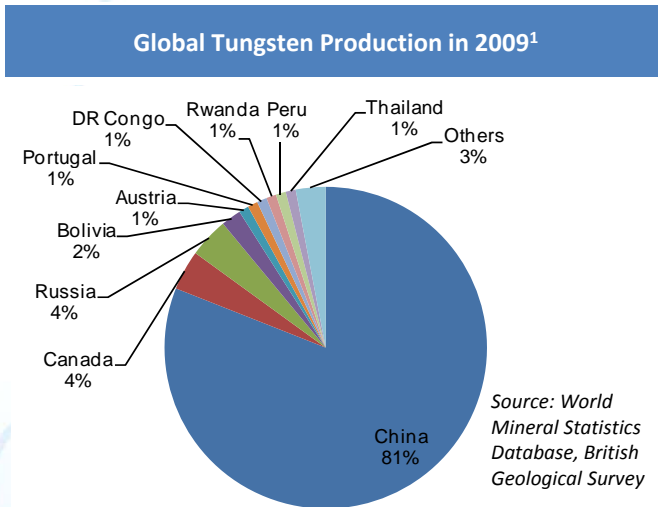
China is the dominant global supplier and restricts exports of this strategic metal.

Key Supply Issues¹

- Primary tungsten production in 2010 estimated at 69,600t.
- Recycling can make up 30% of total supply.
- China produces 86% but restricts exports to processed WO₃ only.
- Non-Chinese production recovering from oversupply in the 1980s.
- USA, Russian and Japanese stockpiles have been depleted.
- Tungsten declared a US “conflict metal” in 2010.

Key Drivers of Demand¹

- Primarily driven by industrial output.
- 58% of consumption relates to cemented carbides.
- China expected to account for 37% of world consumption in 2010.
- World reliance on Chinese supply.
- Few substitutes and increasing numbers of tungsten applications.
- Industrial output has accelerated post Global Financial Crisis.



1. Refer to: <http://www.bqs.ac.uk/downloads/start.cfm?id=1981>

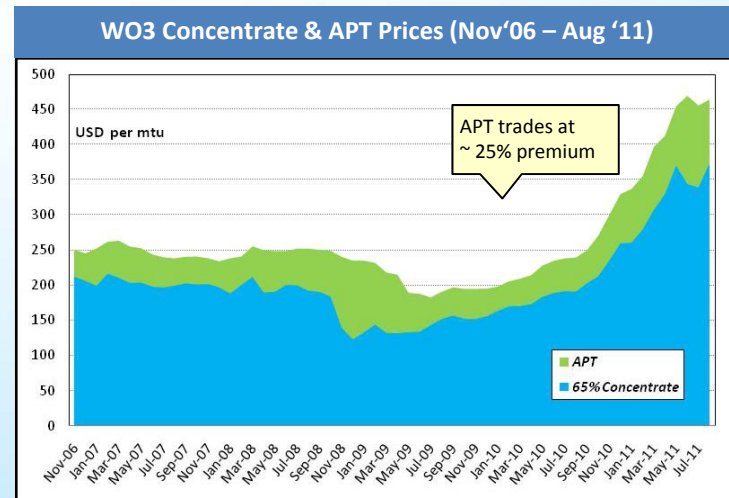
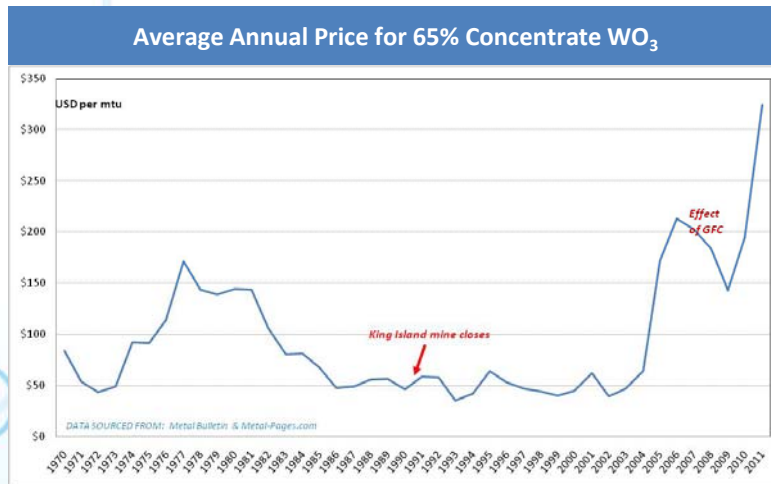
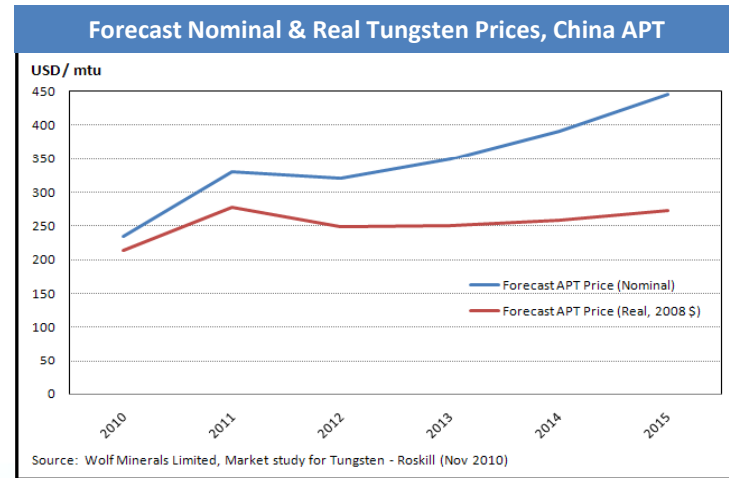


Prices



- Total consumption of tungsten metal forecast to grow from 71,000t in 2010 to 132,000t in 2020.
- Non – Chinese APT producers currently source 80% of their concentrate from China.
- Tungsten APT prices increased 95% in 12mths to Aug 2011.
- APT trades at a premium to 65% WO₃ concentrate.

(mtu is equivalent to 100Kg)



Dolphin – Former Mine



Former mine operated as an open pit until 1975, then as an underground operation up to 1990.

Gravity and flotation processes produced high grade WO_3 concentrates.

Closed due to low tungsten prices.



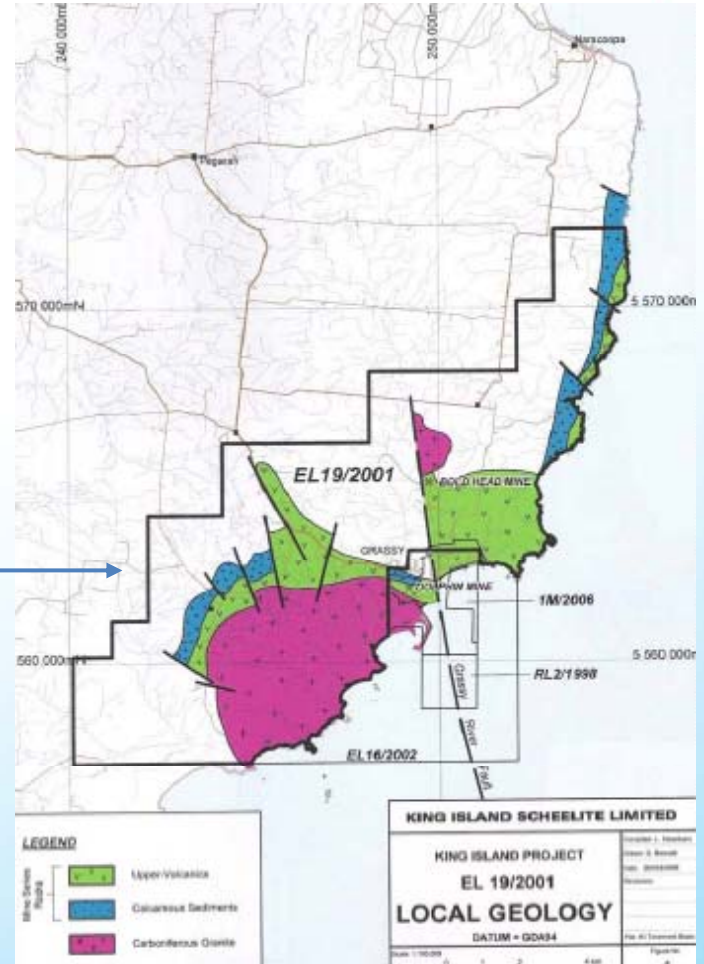
The mine created significant employment, a new harbour and enjoyed strong local support.

Site has since been fully rehabilitated.

Strong local support to restart mining operations.



Dolphin Project



- The project is located on King Island, off the coast of Tasmania.
- Tenements are 100% owned by KIS and in good standing.
- Development approvals being upgraded to reflect new plan.
- Access to existing infrastructure: port, water, camp, roads etc.



Project Overview

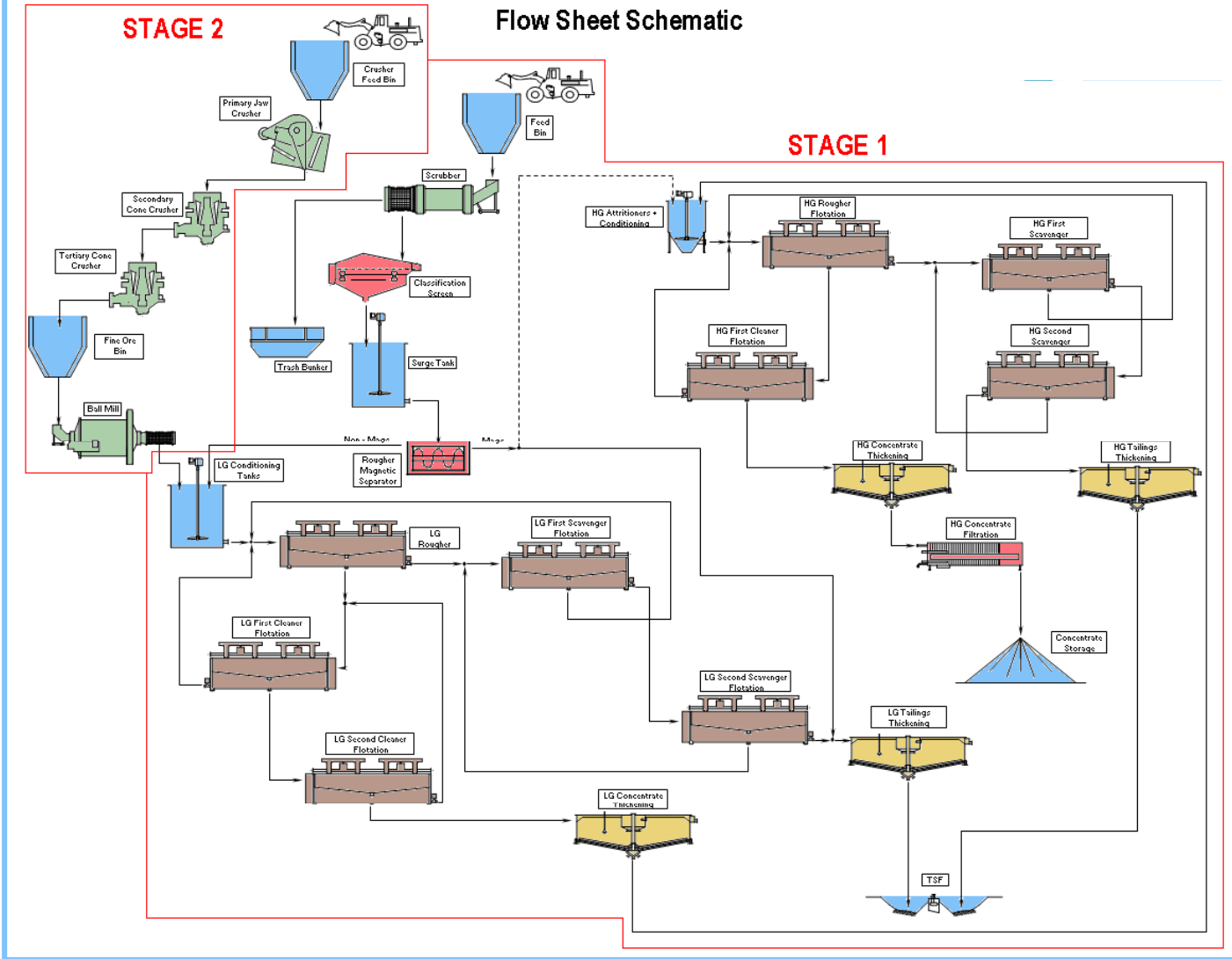


	Mine			Mill			Process Description
	Tonnes	Grade	WO ₃ Tonnes	Recovery	Concentrate Grade	ProductionWO ₃ Tonnes	
Tailings	2.7Mt * (Resource)	0.17% *	4,590t	55%	65%	2,057t	<ul style="list-style-type: none"> Recover tailings through dry mining at 1,360,000tpa. Construct (back-end) section of processing facility. Use pre-concentration and flotation to recover WO₃. Some confirmatory test work still required. Production from 2012 at 1,300tpa metal contained.
Bold Head	0.6Mt * (Reserve)	0.72%*	4,250t	91%	65%	4,212t	<ul style="list-style-type: none"> Dewater former mines and rehabilitate declines. Engage contractor to operate underground mines producing 350,000tpa. Post-pillar stoping with paste fill.
Dolphin	2.68Mt * (Reserve)	1.04%*	28,060t	91%	65%	25,566t	<ul style="list-style-type: none"> Construct front end of processing plant. Use whole-ore-flotation to recover WO₃. Recovery based on extensive flotation test work. Production from 2014 at 3,600tpa metal contained.
Total			36,900t			31,835t	

* Tonnes and grades are per previous resource and reserve announcements in accordance with JORC Code 2004.

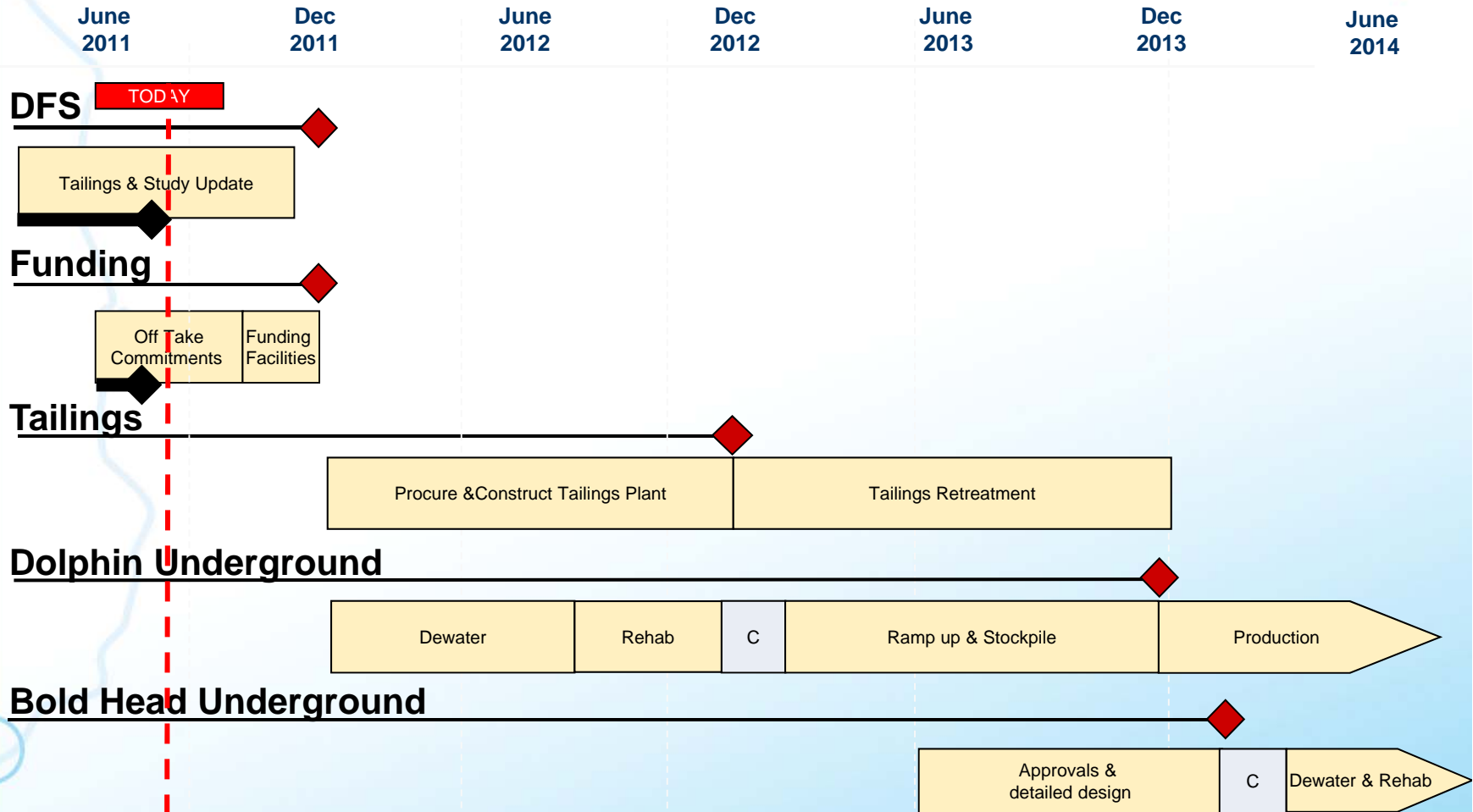


Treatment Plant Flow Sheet Schematic



Dolphin development plan

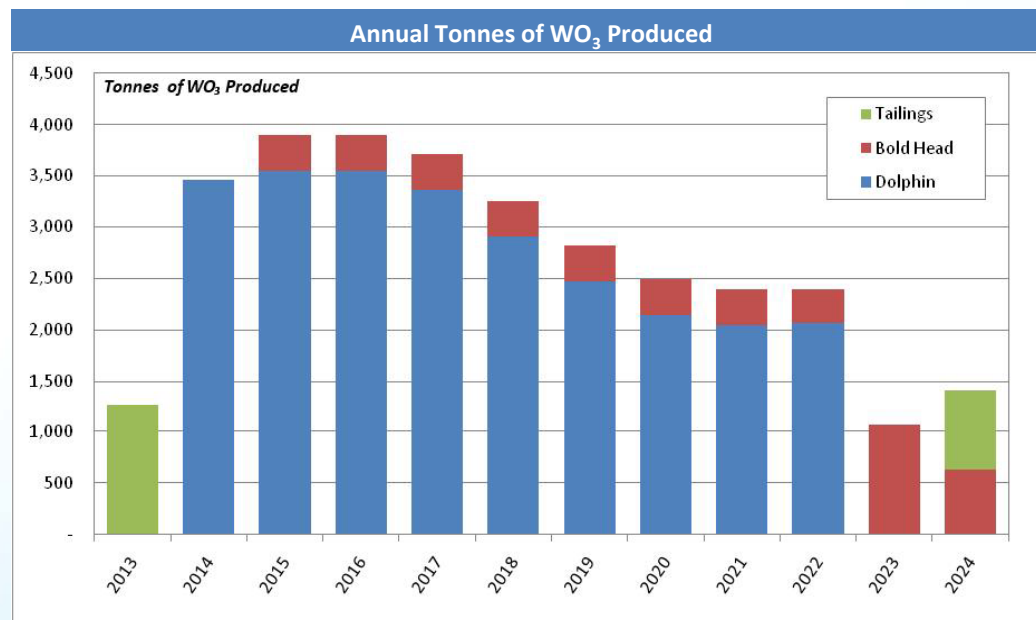
- ◆ Current status
- ◆ Target
- C Contingency



Major supplier to global tungsten producers



- Will account for 5% of current global primary production.
- To become largest producing mine outside China.
- Production chart below includes additional tonnes from revised reserve estimate.
- 12 year mine life before any exploration success.



Significant value and upside



Base Project

	Measure	
Total revenue	\$M	860
Price (at Sept 2011 – USD 377)	US\$/Mtu	270
Foreign exchange rate	AUD:USD	1.00
Project Capital	\$M	112
Operating cost of underground production	US\$/Mtu	<120

Note the above are estimates only as feasibility study currently being updated

Upside

Dolphin South Exploration

Independent geologist reports indicate potential for substantial additional tonnes down-plunge (no drilling since 1980's).

> \$40 million free cashflow for every additional year of mine life

APT Plant

Potential value uplift of 25% on WO_3 if sold as APT.

> \$40 margin/ mtu of WO_3 with outlay of \$20-25 million for APT plant





KING ISLAND SCHEELITE LIMITED

Simon Bird
Chief Executive Officer

Level 1, 101 Sussex Street
Sydney NSW 2000

Phone: (02) 8622 1400

Fax: (02) 8622 1401

Email: simon.bird@kingislandscheelite.com.au

